

Features

- Aluminium casing
- Indoor/outdoor
- Flush or surface mount with optional adaptors
- IP66
- 520 TVL
- 0.2Lux @F1.2
- 7m IR range
- 12Vdc power
- 3-Axis Gimbal Chassis
- Aspherical Varifocal lens
- Focal length 3.6mm (4.3mm also available to special order)
- DC Auto Iris

Technical Data

General Specifications

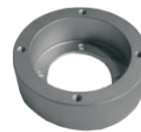
Camera	1/3" CCD True Day/ Night Colour CCD with Camera 1/3" CCD SDN
Pixel Elements	PAL 795 (H) x 596 (V)
Minimum Illumination	0.0 Lux @ F1.2 with IR Leds ON
Resolution	520 TVL
Shutter Speed	1/50s ~ 1/100 000s
S/N Ratio	46 dB (AGC Off)
Gamma Compensation	0.45
Sync System	Internal
Housing Colour	Chrome or Black
Type of Lens	Fixed 3.6mm
Voltage	DC 12V(8 ~ 18V)
Power Consumption	2W max
Operation Temperature	-10°C ~ +55°C
Storage Temperature	-20°C ~ +70°C

Order Codes

Vi-C21M	IR Micro dome, chrome housing
Vi-C21B	IR Micro dome, black housing

Accessories

Vi-PSU15	Power Supply, 12V DC 1A in-line
Vi-C21/FM	Flat surface mount adaptor, chrome
Vi-C21/FB	Flat surface mount adaptor, black
Vi-C21/AM	Angled surface mount adaptor, chrome
Vi-C21/AB	Angled surface mount adaptor, black



Flat surface mount adaptor



Angled surface mount adaptor

Overview

Suitable for indoor and outdoor use, our micro dome cameras feature an aluminium housing built to IP66. The high resolution camera is fitted on a 3-axis gimbal allowing easy positioning and comes with a 3.6mm lens. It integrates infrared leds for a round-the-clock surveillance with colour images during the day and black and white images at night. The Vi-C21 series is the ideal solution for mobile applications such as buses, trains, taxis and elevators.

Videoswitch, Ocean House, Redfields Industrial Park, Redfields Lane, Church Crookham, Hants GU52 0RD

www.videoswitch.co.uk

Tel: 01252-851510 Fax: 01252-851296 Email: sales@videoswitch.co.uk

This product is designed and manufactured to the highest standards within our ISO9000 certified quality assurance system. It is certified to meet the CE mark requirements in accordance with the 89/336/EEC Electromagnetic Compatibility and 73/23/EEC Low Voltage directives. Due to a policy of ongoing product development, specifications may change without notice.



Vsd550i

Videoswitch, Ocean House, Redfields Industrial Park, Redfields Lane, Church Crookham, Hants GU52 0RD

www.videoswitch.co.uk

Tel: 01252-851510 Fax: 01252-851296 Email: sales@videoswitch.co.uk

This product is designed and manufactured to the highest standards within our ISO9000 certified quality assurance system. It is certified to meet the CE mark requirements in accordance with the 89/336/EEC Electromagnetic Compatibility and 73/23/EEC Low Voltage directives. Due to a policy of ongoing product development, specifications may change without notice.



Vsd550i