



## Features

- Full function PTZ speed dome
- 360° per second pan speed
- 0.02° resolution
- 0.02° per second minimum tracking rate
- Full 360° pan & tilt night vision with a viewing diameter up to 200 metres
- Sony EX-View high performance camera module
- X18, X26 or 36 optical zoom, x12 digital zoom
- Dual camera option - view and record the whole picture on the context camera while zooming in on the main camera
- Vandal resistant hemisphere and housing
- Advanced privacy, preset positions & multiple tour options
- Mount options include wall, corner, ceiling, swan neck, and pendant
- Telemetry protocols: Videoswitch VXP-4, BBV (coax), PelcoD, PelcoP, Vista
- Automatic protocol and baud sensing
- Address set via menu
- Programmable pan limits
- 2 years warranty
- Weatherproofed to IP66
- Quick mount and release
- Video lift and gain facility
- Manufactured in the UK

## Order Codes

### Standard Models

|          |           |
|----------|-----------|
| Vi-D218X | 18:1 zoom |
| Vi-D226X | 26:1 zoom |
| Vi-D236X | 36:1 zoom |

### Dual Camera Models

|           |                        |
|-----------|------------------------|
| Vi-D218DX | 18:1 zoom, Dual camera |
| Vi-D226DX | 26:1 zoom, Dual camera |
| Vi-D236DX | 36:1 zoom, Dual camera |

### Accessories

|           |   |
|-----------|---|
| Vi-PSU-1  | CMOR Dome Power Supply, IP66, 24VDC                       |
| Vi-PSU-1A | CMOR Dome Power Supply, with 16 alarm inputs, IP66, 24VDC |
| Vi-AL1    | CMOR Dome Alarm Module, 16 inputs                         |
| Vi-B2     | Wall bracket and 3m cable                                 |
| Vi-B2D    | Wall bracket and 3m cable for dual camera dome            |
| Vi-B3     | Pendant mount (380mm) with 4m cable                       |
| Vi-B3D    | Pendant mount (380mm) with 4m cable for dual camera dome  |
| Vi-B4     | Swan neck mount with 4m cable                             |
| Vi-B4D    | Swan neck mount with 4m cable for dual camera dome        |
| Vi-B5     | Corner adaptor for wall bracket                           |
| Vi-B6     | Pole adaptor  |
| Vi-B7     | Adaptor for brackets with 63.5mm PCD                      |
| Vi-B8     | Ceiling adaptor. Total height including dome is 320mm     |

## Overview

The CMOR EvolutionX dome is a full function profession dome built to the highest standards with vandal-proof cast aluminium enclosure and high impact resistance pycarbonate hemisphere. High speed of operation together with smooth and responsive control is a feature of the CMOR evolution domes.

Videoswitch, Ocean House, Redfields Industrial Park, Redfields Lane, Church Crookham, Hants GU52 0RD

[www.videoswitch.co.uk](http://www.videoswitch.co.uk)

Tel: 01252-851510 Fax: 01252-851296 Email: [sales@videoswitch.co.uk](mailto:sales@videoswitch.co.uk)

This product is designed and manufactured to the highest standards within our ISO9000 certified quality assurance system. It is certified to meet the CE mark requirements in accordance with the 89/336/EEC Electromagnetic Compatibility and 73/23/EEC Low Voltage directives. Due to a policy of ongoing product development, specifications may change without notice.



Vsd550E

### Technical Data

#### Camera(s)

|                        |   |             |             |
|------------------------|---|-------------|-------------|
| Camera                 | Sony Colour/monochrome Ex-View HAD 1/4" CCD PAL |             |             |
| Resolution             | 460TVL, 440,000 pixels                          |             |             |
| Colour sensitivity     | 0.1lux  |             |             |
| Monochrome sensitivity | 0.01lux   |             |             |
| Optical zoom           | x18   | x26         | x36         |
| Angle of view (horiz)  | 48° - 2.7°                                      | 54° - 2.2°  | 58° - 1.7°  |
| Focal length           | 4 - 74mm  | 3.5 - 91mm  | 3.4 - 122mm |
| Aperture               | F1.4 to F3                                      | F1.6 - F3.8 | F1.6 - F4.5 |
| Digital zoom           | 12x   |             |             |

#### Mechanics

|                        |   |
|------------------------|---|
| Pan speed              | 360°/sec  |
| Tilt speed             | 200°/sec  |
| Pan angle              | 360° continuous pan rotation                      |
| Pan limits             | a left and right limit may be programmed          |
| Tilt angle             | +5 to -90   |
| Pan/Tilt to zoom ratio | Menu programmable realation between zoom and rate |

#### Physical and Environmental

|                       |   |
|-----------------------|---|
| Material              | Cast aluminium dome, polycarbonate hemisphere |
| Operating temperature | -35°C to 50°C                                 |
| Environmental         | IP66  |
| Finish                | Grey (Black and other colours to order)       |

#### Telemetry

|                       |  |
|-----------------------|--|
| RS485                 | Videoswitch VXP4, PelcoD, PelcoP, Vista (auto sensing) |
| Addressing            | Set via menu   |
| Baud rate             | 9600, 4800 or 2400 baud (auto sensing)                 |
| Coax telemetry        | BBV compatible (auto sensing)                          |
| Auto protocol sensing | Yes  |

#### Features

|                        |  |
|------------------------|--|
| Dynamic privacy zones  | 24 zones up to 8 displayed simultaneously  |
| Presets                | 100  |
| Preset tours           | 8  |
| Resolution preset      | 0.02 degree  |
| Camera/Preset titles   | 16 alphanumeric characters   |
| Video amplification    | HF lift & gain, menu controlled  |
| Video launch amplifier | 0-6dB 8 steps  |
| Password Protection    | Yes  |
| Photocell              | Inbuilt  |
| Fan                    | Yes  |
| Heater                 | Yes  |
| Quick mount/release    | The dome hooks safely onto the mount without the need of a safety wire and is secured using a hand operated tightening wheel. A single bolt provides both quick installation of the cover and tamper protection. |
| Origin                 | Manufactured in the UK   |

#### Power

|                   |              |
|-------------------|--------------|
| Power requirement | 24VDC @ 2.5A |
|-------------------|--------------|

#### Options

|                  |   |
|------------------|---|
| Alarm Module     | Vi-ALM1 (16 alarm inputs)   |
| Power supply     | Vi-PSU1 or Vi-PSU1A (with alarms)   |
| Mounting options | Wall, corner, swan-neck, pendant, post                                      |
| Colours          | Standard colour is light grey. Black and other colours available on request |

### Accessories

Vi-PSU1 Power Supply  
(with Vi-AL16 Alarm module fitted)



Vi-B2 Wall mount bracket



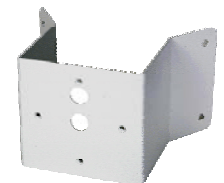
Vi-B3 Pendant mount



Vi-B4 Swan neck mount



Vi-B5 Corner adaptor



Vi-B6 Pole mount adaptor



Videoswitch, Ocean House, Redfields Industrial Park, Redfields Lane, Church Crookham, Hants GU52 0RD

[www.videoswitch.co.uk](http://www.videoswitch.co.uk)

Tel: 01252-851510 Fax: 01252-851296 Email: [sales@videoswitch.co.uk](mailto:sales@videoswitch.co.uk)

This product is designed and manufactured to the highest standards within our ISO9000 certified quality assurance system. It is certified to meet the CE mark requirements in accordance with the 89/336/EEC Electromagnetic Compatibility and 73/23/EEC Low Voltage directives. Due to a policy of ongoing product development, specifications may change without notice.



Vsd550E